



Please dispose of packaging for the product in a responsible manner. It is suitable for recycling. Help to protect the environment, take the packaging to the local amenity tip and place into the appropriate recycling bin.



Never dispose of electrical equipment or batteries in with your domestic waste. If your supplier offers a disposal facility please use it or alternatively use a recognised re-cycling agent. This will allow the recycling of raw materials and help protect the environment.



Sip
SIP INDUSTRIAL

machinery specialists since 1968

Fireball 1822 Infrared Diesel Heater



09312

Please read and fully understand the instructions in this manual before operation. Keep this manual safe for future reference.

*FOR HELP OR ADVICE ON THIS PRODUCT PLEASE CONTACT YOUR DISTRIBUTOR, OR
SIP DIRECTLY ON:
TEL: 01509500400
EMAIL: sales@sip-group.com or technical@sip-group.com
www.sip-group.com*

Declaration of Conformity

We

SIP (Industrial Products) Ltd
Gelders Hall Road
Shepshed
Loughborough
Leicestershire
LE12 9NH
England

As the manufacturer within the UK, England, Scotland & Wales, declare that the

Fireball 1822 Infrared Diesel Heater - SIP Pt No: 09312

Conforms to the requirements of the following directive(s), as indicated.

- Supply of Machinery (Safety) Regulations 2008
The Restriction of the Use of Certain Hazardous Substances in Electrical and Electronic Equipment Regulations 2012
Electromagnetic Compatibility Regulations 2016

And the relevant harmonised standard(s), including:

- BS EN 60335-1:2012+A11:2014
BS EN 60204-1:2006+A12009
BS EN 61000-3-2:2014
BS EN 61000-3-3:2013
BS EN 61000-6-2:2005
BS EN 61000-6-4:2007+A1:2011
BS EN 62233:2008
BS EN ISO 12100:2010

Handwritten signature of Paul Ippaso

Signed:

Mr P. Ippaso - Director - SIP (Industrial Products) Ltd
Date: 21/04/2021



Declaration of Conformity

We

SIP (Machinery Europe) Ltd
ASM Chartered Accountants
First Floor Block One
Quayside Business Park
Dundalk
County Louth
Republic of Ireland

As the manufacturer's authorised representative within the EC

Fireball 1822 Infrared Diesel Heater - SIP Pt No: 09312

Conforms to the requirements of the following directive(s), as indicated.

- Machinery Directive 2006/42/EC
Restriction of the Use of certain Hazardous Substances in Electrical and Electronic Equipment (RoHS) - Directive 2002/95/EC
Electromagnetic Compatibility - Directive 2014/30/EU

And the relevant harmonised standard(s), including:

- EN 60335-1:2012+A11:2014
EN 60204-1:2006+A12009
EN 61000-3-2:2014
EN 61000-3-3:2013
EN 61000-6-2:2005
EN 61000-6-4:2007+A1:2011
EN 62233:2008
EN ISO 12100:2010

Handwritten signature of Paul Ippaso

Signed:

Mr P. Ippaso - Director - SIP (Industrial Products) Ltd
Date: 21/04/21.



Permanent Pilot Flame Power Requirement	Pilot	N/A	KW	SIP (INDUSTRIAL PRODUCTS) LTD, Gelders Hall Road, Shepshed, Loughborough, Leicestershire LE12 9NH, Tel: 01509500500.
		Pilot Flame Power Requirement (if Applicable)		
Contact Details				

Page No.	Description
4.	Safety Symbols Used Throughout This Manual
4.	Safety Instructions
7.	Electrical Connection
8.	Guarantee
9.	Contents & Accessories
10.	Technical Specifications
11.	Getting to Know Your Heater
12.	Assembly Instructions
13.	Operating Principle
13.	Operating Conditions
14.	Operating Instructions
15.	Maintenance
16.	Wiring Diagram
17.	Troubleshooting
18.	Exploded Drawing
19.	Parts List
21.	ERP Information
2 & 23.	UK & EU - Declaration of Conformity

SAFETY SYMBOLS USED THROUGHOUT THIS MANUAL



Danger / Caution: Indicates risk of personal injury and/or the possibility of damage.



Warning: Risk of electrical injury or damage!



Note: Supplementary information.

SAFETY INSTRUCTIONS



IMPORTANT: Please read the following instructions carefully, **failure to do so could lead to serious personal injury and / or damage to the heater.**

When using your heater, basic safety precautions should always be followed to reduce the risk of fire, electric shock, personal injury and / or damage to the heater. Read all these instructions before operating the heater and save this user manual for future reference.

SIP recommends that this heater should **not** be modified or used for any application other than that for which it was designed. If you are unsure of its relative applications do not hesitate to contact us and we will be more than happy to advise you.

KNOW YOUR HEATER: Read and understand the owner's manual and labels affixed to the heater. Learn its applications and limitations, as well as the potential hazards specific to it.

DO NOT USE THE HEATER IN DANGEROUS ENVIRONMENTS: Do not use your heater in damp or wet locations, including bathrooms or similar or expose it to rain. Always provide adequate space around the heater.

DO NOT OPERATE THE HEATER IN EXPLOSIVE ATMOSPHERES: Do not use the heater in the presence of flammable liquids, gases, dust or other combustible sources.

KEEP CHILDREN AND UNTRAINED PERSONNEL AWAY FROM THE WORK AREA: All visitors should be kept at a safe distance from the work area.

STORE THE HEATER SAFELY WHEN IT IS NOT IN USE: The heater should be stored in a dry, locked cupboard, or similar when not in use wherever possible and out of the reach of children.

STAY ALERT: Always watch what you are doing and use common sense.

ERP INFORMATION

Model: 09312		Indirect Heating Functionality: No		Direct Heat Output: 32.2kW	
Fuel	Diesel / Paraffin				
	Liquid				
Select Fuel Type		Symbol	Value	Unit	
Heat Output	Item	Useful Efficiency (NCV)			
		Useful Efficiency at Nominal Heat Output	93.6	%	
Minimum Heat Output (indicative)		Symbol	Value	Unit	
		P _{nom}	32.2	kW	
		P _{min}	N/A	kW	
Auxiliary Electricity Consumption		Type Of Heat Output / Room Temperature Control (select one)			
At Nominal Heat Output	e _{lmax}	Single Stage Heat Output, No Room Temperature Control			
At Minimum Heat Output	e _{lmin}	Two or More Manual Stages, No Room Temperature Control			
In Standby Mode	e _{lSB}	With Mechanical Thermostat Room Temperature Control			
		With Electronic Room Temperature Control			
		With Electronic Room Temperature Control Plus Day Timer			
		With Electronic Room Temperature Control Plus Week Timer			
		Other Control Options (Multiple Selections Possible)			
		Room Temperature Control, With Presence Detection			
		Room Temperature Control, With Open Window Detection			
		With Distance Control Option			
		With Adaptive Start Control			
		With Working Time Limitation			
		With Black Bulb Sensor			

Continued on Page 22

Ref No.	Description.	Sip Part No.	Ref No.	Description.	Sip Part No.
59.	Auxiliary PCB	PW09-10469	69.	Wheel Support Frame	PW09-00318
60.	Auxiliary PCB Wiring	PW09-00309	70.	Wheel Axle	PW09-00319
61.	Tilt Switch	PW09-00310	71.	Wheel	PW09-00320
62.	Tilt Switch Wiring	PW09-00311	72.	Washer	PW09-00321
63.	Rear Cover	PW09-00312	73.	Pin	PW09-00322
64.	Rear Cover Plate	PW09-00313	74.	Handle Retaining Bracket	PW09-00323
65.	Power Switch	PW09-00314	75.	Pressure Sensor	PW09-00324
66.	Power Switch Wiring	PW09-00315	76.	Venturi	PW09-00325
67.	Spark Plug Cover	PW09-00316	77.	Pressure Sensor Hose	PW09-00326
68.	Handle	PW09-00317	78.	Thermistor	PW09-10463
			N/A	Hose Clamp	PW09-10473

DISCONNECT THE HEATER FROM THE MAINS SUPPLY: When not in use.
AVOID UNINTENTIONAL STARTING: Make sure the switch is in the **OFF** position before connecting the heater to the mains supply.
DO NOT ABUSE THE MAINS LEAD: Never carry the heater by the mains lead or pull it to remove the plug from the mains socket. Keep the mains lead away from heat, oil and sharp edges. If the mains lead is damaged, it must be replaced by the manufacturer or its service agent or a similarly qualified person in order to avoid unwanted hazards.
HAVE YOUR HEATER REPAIRED BY A QUALIFIED PERSON: The heater is in accordance with the relevant safety requirements. Repairs should only be carried out by qualified persons using original spare parts, otherwise this may result in considerable danger to the user.

- **DANGER!** Check that the heater is in sound condition and good working order. Take immediate action to repair or replace damaged parts.
- Use recommended parts only - Unapproved parts may be dangerous and will invalidate the warranty.
- **WARNING!** Do not direct the front of the heater towards any combustible materials (e.g. wooden items, cloth, plastics, paper, etc).
- Only operate on a level and stable surface.
- **WARNING!** Do not use the heater near flammable material, liquids, solids, gases or compressed gas cylinders.
- Do not allow untrained persons to operate the heater and do not operate the heater without all covers etc. correctly fitted.
- Do not move or handle the heater when it is running or still hot - always turn it off and allow it to cool.
- Do not leave the heater unattended when in use. Switch the heater off and unplug from the mains supply before leaving the work area.
- Do not obstruct the air inlet (rear) and air outlet (front) of the heater.
- Do not use any form of ducting in front or at the rear of the heater.
- Do not allow children or animals near the heater, particularly when in use, or while still hot.
- **WARNING! RISK OF ELECTRIC SHOCK.** Do not expose the heater to water spray, rain, dripping water or moisture of any kind.
- Do not touch the heater outlet or any internal parts when first switched off as these can be hot and will take time to cool.
- Ensure that the heater is correctly turned off when not in use and store in a safe, dry area, out of reach of children.
- Do not unplug the heater to switch it off - always use the on/off switch.
- **NEVER** use this heater where flammable vapours may be present.
- Keep all combustible materials away from this heater.
- When using the heater for the first time, you may notice a slight emission of smoke, or a slight burning smell. This is normal and will stop after a short time. Parts of the heater

SAFETY INSTRUCTIONS...cont

were coated with protection oil during production. The smoke / smell is caused by any small residue of this oil.

- **NEVER** cover the heater.
- **NEVER** move or handle the heater while still hot.
- **ALWAYS** locate heater on a stable and level surface.
- **ALWAYS** keep children and animals away from heater.
- Only use the heater in an upright position.
- Never stand on the heater.
- **DO NOT** dismantle or tamper with the heater, as this may be dangerous and will invalidate the warranty.
- Understand the operating environment; Before each use the operator should assess, understand and where possible reduce the specific risks and dangers associated with the operating environment. Bystanders should also be made aware of any risks associated with the operating environment.
- Use only the electrical power (voltage and frequency) specified on the specification label of the heater.
- Use only a three-prong, grounded outlet.
- **ALWAYS** unplug the heater when not in use.

If a problem with the heater is experienced, or if the mains lead or plug become damaged, stop operation and contact your distributor for repair.

If the heater is used in a place of work all rules and laws etc. relating to the use of portable electrical appliances should be followed.

WARNING: Risk of Electric Shock!

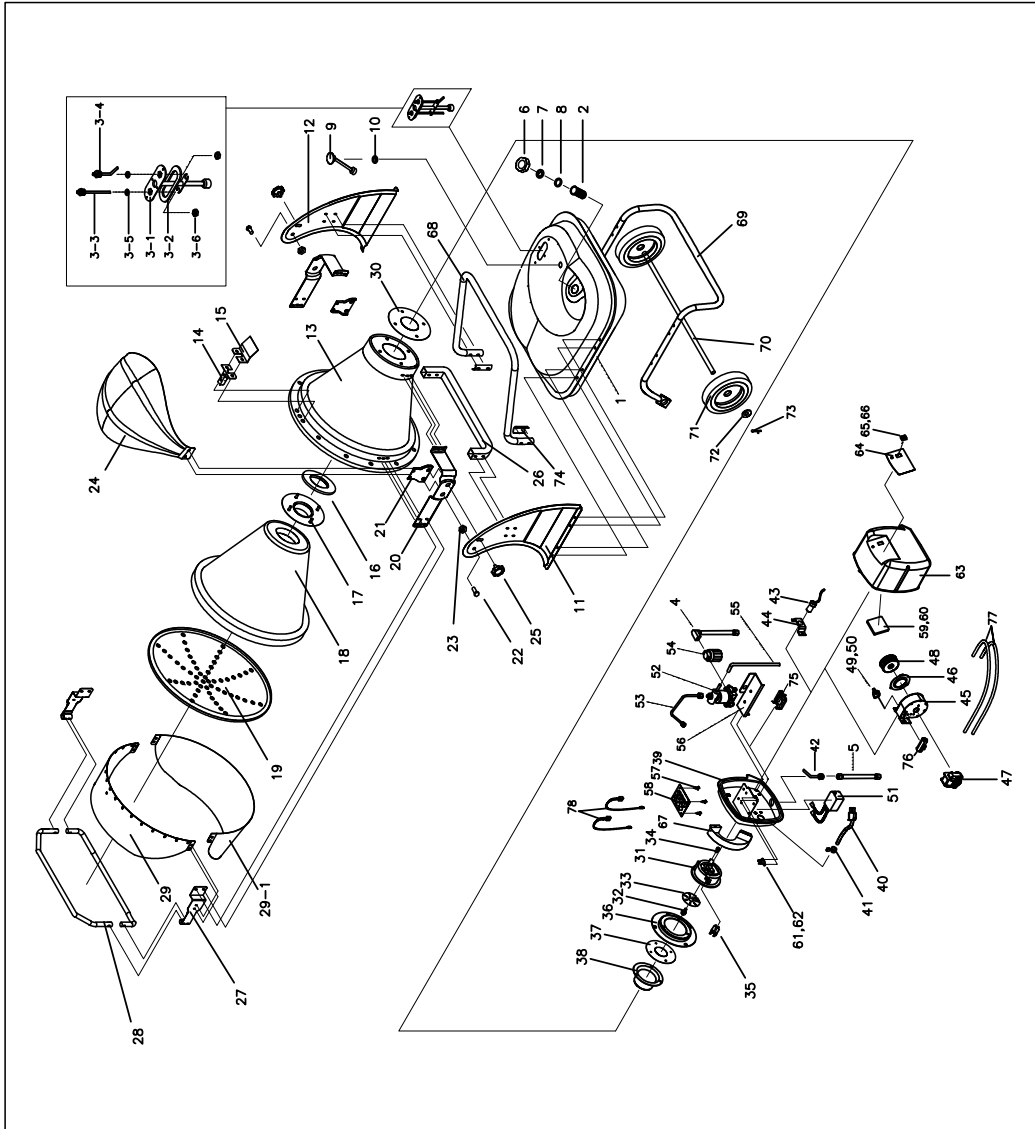
This heater is only suitable for well insulated spaces or occasional use.



Caution: The warnings and cautions mentioned in this user manual can not cover all possible conditions and situations that may occur. It must be understood by the operator that common sense and caution are factors which can not be built into this product, but must be applied.

PARTS LIST

Ref. No.	Description	SIP Part No.	Ref. No.	Description	SIP Part No.
1.	Fuel Tank	PW09-00250	28.	Guard	PW09-00279
2.	Fuel Filter	PW09-00470	29.	Visor	PW09-00280
3-1.	Float Sensor	PW09-00252	29-1.	Lower Visor	PW09-00281
3-2.	Float Sensor Gasket	PW09-00253	30.	Burner Gasket	PW09-00282
3-3.	Fuel Pipe	PW09-00471	31..	Burner Head	PW09-00283
3-4.	Return Pipe	PW09-00255	32.	Nozzle	PW09-10464
3-5.	Pipe Seal	PW09-00256	33.	Burner Head Blade	PW09-10465
3-6.	Nut	PW09-00257	34.	Nipple	PW09-00286
4.	Rubber Hose	PW09-00472	35.	Electrode	PW09-00287
5.	Hose	PW09-00259	36.	Burner Plate	PW09-00288
6.	Fuel Cap	PW09-00260	37.	Burner Head Gasket	PW09-00289
7.	Fuel Cap Inner Seal		38.	Inner Diffuser	PW09-00290
8.	Fuel Cap Seal		39.	Panel Surround	PW09-00291
9.	Fuel Gauge	PW09-00261	40.	Mains Cable	PW09-00292
10.	Fuel Gauge Seal		41.	Cable Clamp	PW09-00293
11.	Left Tank Support	PW09-00262	42.	Return Hose Connector	PW09-00294
12.	Right Tank Support	PW09-00263	43.	Photocell	PW09-00295
13.	Cone Body	PW09-00264	44.	Photocell Bracket	PW09-00296
14.	Visor Bracket	PW09-00265	45.	Fan Casing	PW09-10466
15.	Sticker Bracket	PW09-00266	46.	Fan Inlet	
16.	Diffuser Gasket	PW09-00267	47.	Fan Motor	
17.	Diffuser	PW09-00268	48.	Fan	
18.	Insulator Body	PW09-00269	49.	Thermostat	PW09-00298
19.	Diffuser Plate	PW09-00270	50.	Thermostat Wire	PW09-00299
20.	Support Bracket	PW09-00271	51.	Ignitor	PW09-00300
21.	Canopy Plate	PW09-00272	52.	Electronic Pump	PW09-10467
22.	Bolt	PW09-00273	53.	Electronic Pump Fuel Pipe	PW09-00302
23.	Nut	PW09-00274	54.	Fuel Filter (External)	PW09-00303
24.	Canopy	PW09-00275	55.	Return Hose	PW09-00304
25.	Adjusting Knob	PW09-00276	56.	Pump Base	PW09-00305
26.	Support Bracket	PW09-00277	57.	PCB Support	PW09-00306
27.	Guard Bracket	PW09-00278	58.	Main PCB	PW09-10468



WARNING! It is the responsibility of the owner and the operator to read, understand and comply with the following:

You must check all electrical products, before use, to ensure that they are safe. You must inspect power cables, plugs, sockets and any other connectors for wear or damage.

You must ensure that the risk of electric shock is minimised by the installation of appropriate safety devices; A residual current circuit breaker (RCCB) should be incorporated in the main distribution board. We also recommend that a residual current device (RCD) is used. It is particularly important to use an RCD with portable products that are plugged into a supply which is not protected by an RCCB. If in any doubt consult a qualified electrician.

Connecting to the power supply:

This SIP heater is fitted with a standard 230v ~ 13 amp type plug. Before using the heater, inspect the mains lead and plug to ensure that neither are damaged. If any damage is visible have the heater inspected / repaired by a suitably qualified person. If it is necessary to replace the plug a heavy duty impact resistant plug would be preferable.

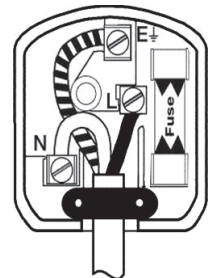
The wires for the plug are coloured in the following way:

Yellow / green	Earth
Blue	Neutral
Brown	Live

As the colours of the wires may not correspond with the markings in your plug, proceed as follows: The wire which is coloured blue, must be connected to the terminal marked with N or coloured black. The wire which is coloured brown, must be connected to the terminal, which is marked L or coloured red. The wire which is coloured yellow / green should be connected to the terminal which is coloured the same or marked



Always secure the wires in the plug terminal carefully and tightly. Secure the cable in the cord grip carefully.





Warning: Never connect live or neutral wires to the earth terminal of the plug. Only fit an approved plug with the correct rated fuse. If in doubt consult a qualified electrician.



Note: Always make sure the mains supply is of the correct voltage and the correct fuse protection is used. In the event of replacing the fuse always replace the fuse with the same value as the original.



Note: If an extension lead is necessary in order to reach the mains supply; The cross section should be checked so that it is of sufficient size so as to reduce the chances of voltage drops. Always fully unwind the lead during use.

GUARANTEE

This SIP heater is covered by a 12 month parts and labour warranty covering failure due to manufacturers defects. This does not cover failure due to misuse or operating the heater outside the scope of this manual - any claims deemed to be outside the scope of the warranty may be subject to charges Including, but not limited to parts, labour and carriage costs.

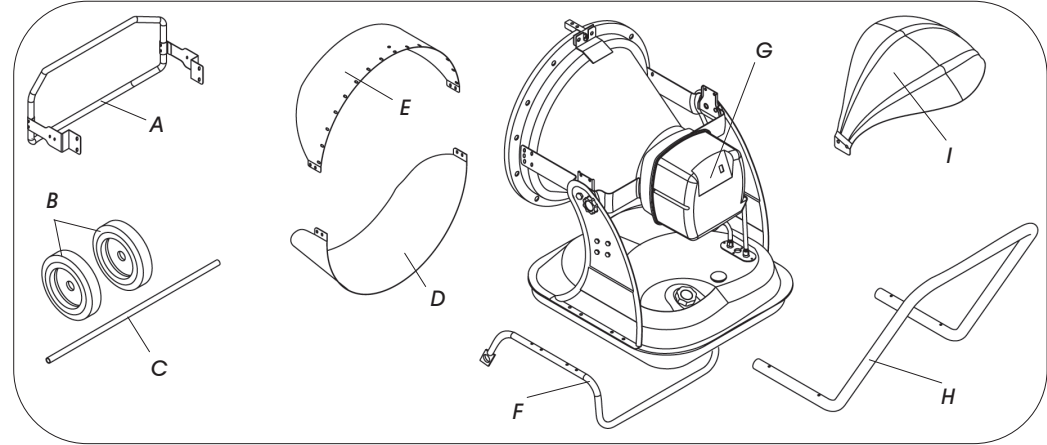
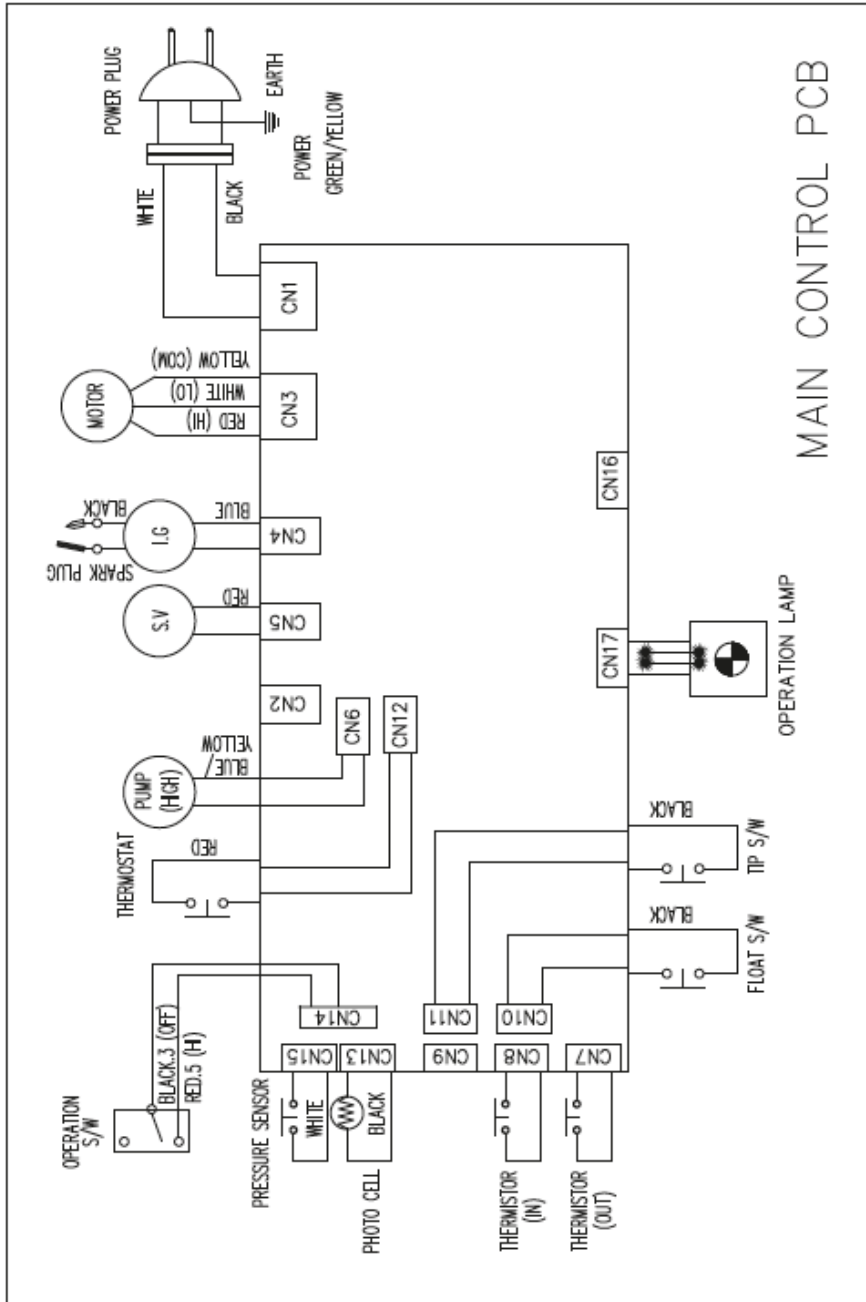
The warranty does not cover consumable parts such as filters & electrodes etc.

In the unlikely event of warranty claims, contact your distributor as soon as possible.



Note: Proof of purchase will be required before any warranty can be honoured.

Fault	Possible Cause / Reason	Possible Solution	Cancel the error after troubleshooting.
Power indicator flickers at 1 second intervals as soon as the heater is turned ON.	Main power switch turned ON when the mains supply is connected and turned on.	Ensure that the main On/Off switch is in the off position prior to connecting to the mains supply.	Turn the heater off and on again.
Power indicator flickers at 1 second intervals after the heater has been turned ON for a while.	<ul style="list-style-type: none"> Fuel shortage. Photocell error. Combustion error. Fuel filter dirty. Ignitor error. 	<ul style="list-style-type: none"> Check and fill with fuel where necessary. Check and clean or replace the photocell. Check and clean or replace the fuel filter. Check electrode and lead - set up, clean or replace as necessary. 	
Power indicator flickers twice consecutively, and repeatedly.	Float sensor operated.	Check fuel level and refuel where necessary.	
Power indicator flickers three times consecutively, and repeatedly.	<ul style="list-style-type: none"> Safety thermostat operated. Tilt switch operated. 	<ul style="list-style-type: none"> Internal temperature too high; Allow the heater to cool, then operate normally. Ensure that the heater is on a firm level surface and restart. 	
Power indicator flickers at 0.2 second intervals.	<ul style="list-style-type: none"> Possible faulty motor. Error on air pressure sensor. 	<ul style="list-style-type: none"> Check and replace motor as necessary. Check and clean / replace the air sensor as necessary. 	



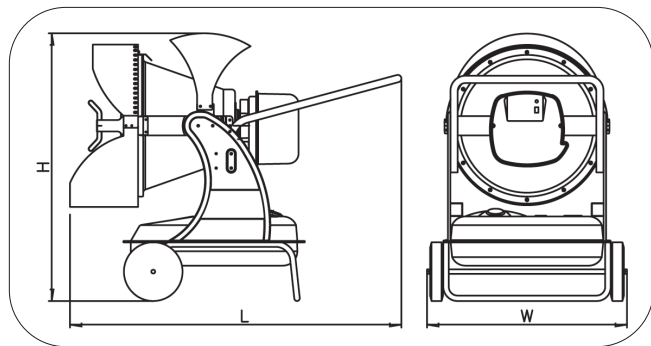
Ref.	Description	Ref.	Description
A.	Front Guard	F.	Wheel Support Frame
B.	Wheels	G.	Main Heater
C.	Axle	H.	Handle
D.	Lower Shield	I.	Upper Cover
E.	Upper Shield		

Items not shown:

- Instruction manual.
- 4 x M6x40 Bolts.
- 4 x M5x35 Bolts.
- 16 x M5x10 Bolts.
- 4 x M6 Nuts.
- 4 x M5 Nuts.
- 2 x Washers.
- 2 x Split Pins.
- 2 x Handle Clamps.

TECHNICAL SPECIFICATIONS

Part Number	09312
Input Voltage	220V - 230V ~ 50hz
Fuel	Diesel / Paraffin
Heat Output	120,000 BTU/hr (30 Kw)
Fuel Consumption	3.4L/Hr (Approx.)
Fuel Tank Size	40 Litres
Weight	34 Kg
Minimum Clearance Around Heater	Top - 1500 mm
	Sides - 1500 mm
	Rear - 1500 mm
	Front - 3000 mm



L	1155 mm	W	696 mm	H	930 mm
---	---------	---	--------	---	--------

MAINTENANCE



Danger: Maintenance operations should only be carried out by suitably qualified persons.

Component	Frequency	Procedure
Fuel Tank	Clean every 150-200 hours of operation or when necessary.	Empty and rinse with fresh fuel.
Nozzle	Clean or replace once per season or when necessary.	Contact service centre.
Photocell	Clean once per season or when necessary.	Contact service centre.
Fuel Filter	Clean or replace twice per season or when necessary.	Clean the fuel filter with clean fuel.
Ignition Device	Clean or replace every 1.000 hours of operation, or when necessary.	Contact service centre.
Fan Blades	Clean when necessary.	Contact service centre.

OPERATING INSTRUCTIONS

- The Fireball 1822 Infrared heater is suitable for well ventilated applications.
- Is a clean burning unit which operates on diesel or paraffin.
- The Heater develops 100,000 Btu/hr.
- The 40 litre fuel tank will run the heater for an extended period between refills.
- The heater is fitted with safety cut-outs to protect against over-heating and to protect the heater should it tip over.

STARTING THE HEATER

(see page 11 for descriptions).

- Fill the fuel tank with clean fuel until the fuel gauge points to "f".
- Ensure the fuel cap is fitted and secure.
- Plug the mains lead into a suitable power socket and turn the mains switch on.
- Push the power switch to the on (I) position.
- The power indicator will illuminate and the heater will start to run.

STOPPING THE HEATER

- Turn the power switch to the off (O) position.
- Combustion will stop and the cooling cycle will begin.
- When the cooling cycle has been completed (the fan stops running), it is safe to unplug the heater from the mains supply.

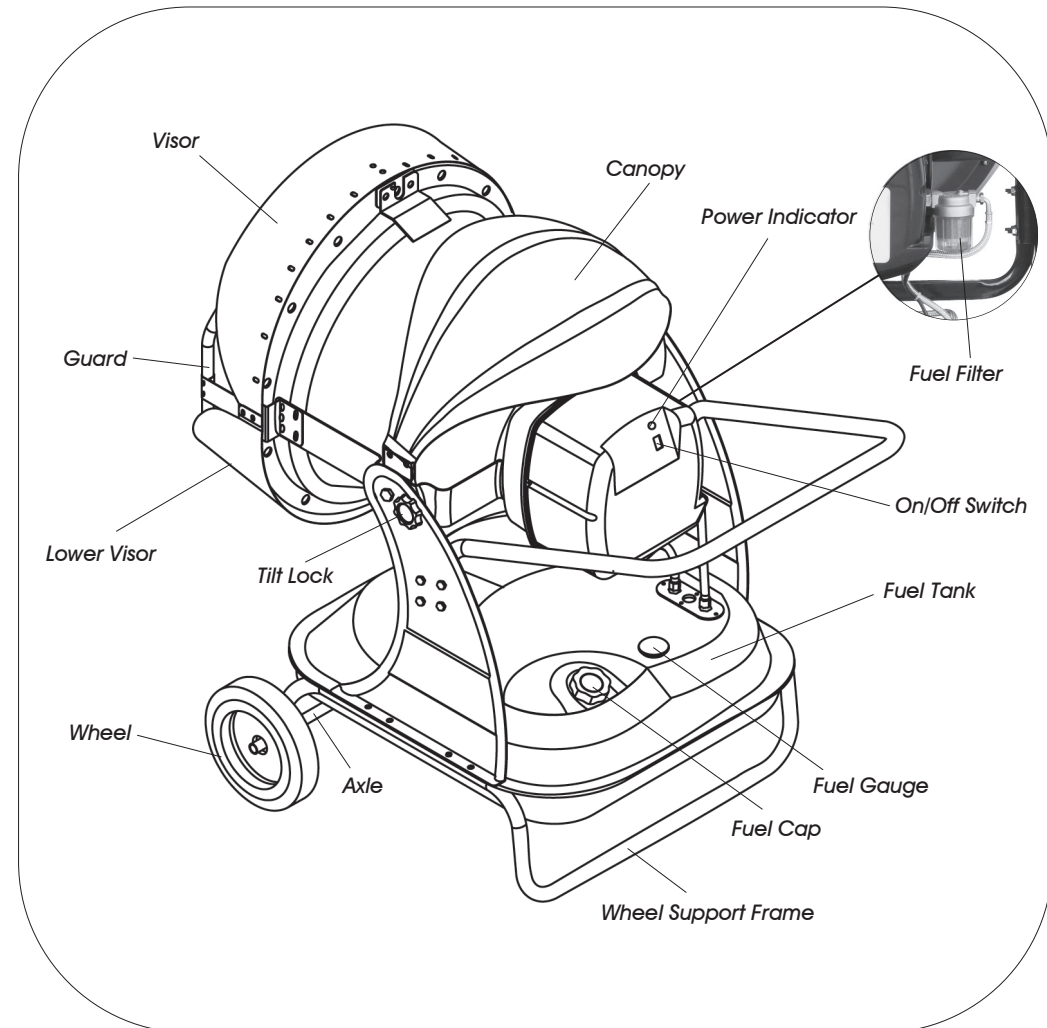


WARNING! Do not turn the mains switch off or disconnect the heater from the mains supply to stop the heater or until the cooling cycle is complete.

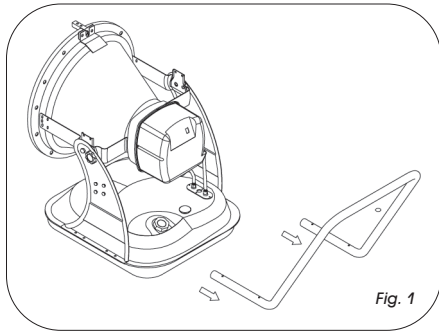


WARNING! Turning the mains switch off, or removing the plug from the mains supply to stop the heater or before the cooling cycle is complete may cause overheating, possible damage to the heater and will void the warranty.

GETTING TO KNOW YOUR HEATER



ASSEMBLY INSTRUCTIONS

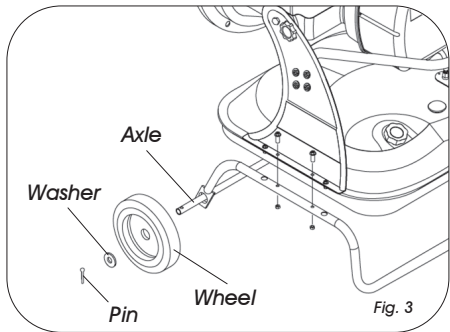
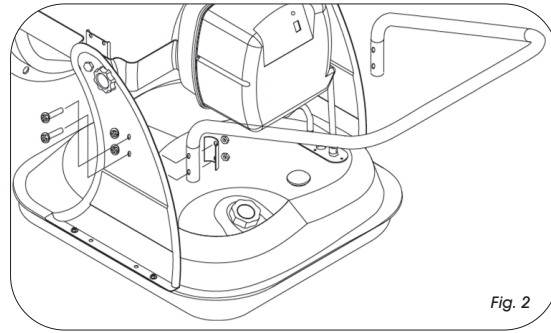


- Remove the heater from the box and separate the handle from its transport position (Fig.1).

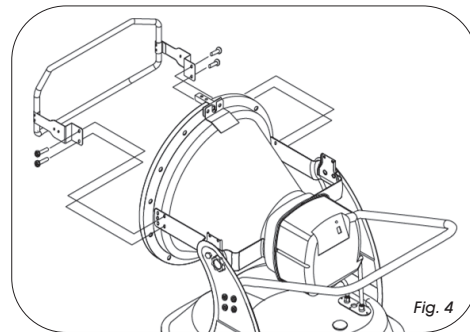


Note: Due to the weight of the heater, at least 2 persons are required to remove it from the packaging and complete assembly.

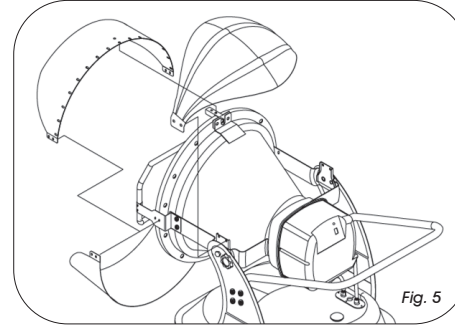
- Fit the handle to the heater as shown (Fig.2); Secure tightly in place with the 4 x bolts (M6x40), 2 x handle clamps and nuts (M6).



- Place the heater onto the wheel support frame and secure in place with 4 x bolts (M5x35) and 4 x nuts (M5) (Fig.3).
- Slide the axle through the wheel support frame so that the overhang is equal on both sides (Fig.3).
- Slide a wheel over the end of one axle, fit a washer over the axle and secure in place with the supplied pin (Fig.3); Follow these instructions to fit the 2nd wheel on the opposite end of the axle.
- Fit the front guard as shown (Fig.4); Secure in place with 4 x bolts (M5x10).



ASSEMBLY INSTRUCTIONS...cont



- Fit the visor, lower visor and the canopy as shown (Fig.5); Secure in place with M5x10 bolts.

OPERATING PRINCIPLE

Airflow is necessary to ensure proper combustion; It is supplied by the internal burner fan.

The air enters the burner funnel and gets mixed with a high-pressure fuel jet. The fuel flow is supplied by an electrical pump, which sucks the fuel from the tank and moves it to the nozzle under high pressure.

OPERATING CONDITIONS



WARNING! Air contaminants taken into the heater may affect the heat output, damage the heater and may cause health problems.

Example: Body-shop filler dust/paint overspray will damage the motor bearing, clog the filter and compressor and contaminate the combustion chamber causing flame flutter and health hazards. Please note that any parts damaged by filler dust/paint overspray or similar will not be covered by warranty. Additionally, a cleaning charge will be made for any heaters damaged by filler dust/paint overspray or similar.

VENTILATION

WARNING! Only operate and refuel/fuel the heater in well ventilated areas. Careful consideration must be given to the placement of the heater to provide safe and comfortable heating. Ensure continuous ventilation is provided to the heater operating area. A ventilation opening **must** run to the outside of the premises in which the heater is to be operated.